

FB4 Individual Components

FB4 Series = 2" NPT Inlet

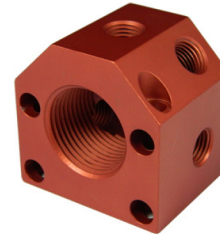
Block Size: 3.50" W x 3.50" H
Material: 6061-T6 Alum Manifold Bar Stock
Finish: Anodized
Mounting Hole Size: 5/16" SHCS
Inlet Hole: 2" NPT
Outlet Hole: 3/4"

Blocks Sold Individually:

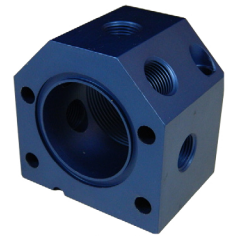
- After Purchase Modifications
- Spare Parts Inventory
- Build your own Assemblies

First Block—Straight—(2" NPT Inlet)

CATALOG NO.	OUTLET HOLE SIZE	BLOCK COLOR	NO. OF OUTLETS
FB4-FB-2-10-R	3/4"	Red	5
FB4-FB-2-10-B	3/4"	Blue	5



Front



Back

First Block—90°—(2" NPT Inlet)

CATALOG NO.	OUTLET HOLE SIZE	BLOCK COLOR	NO. OF OUTLETS
FB4-FB90-2-10-R	3/4"	Red	3
FB4-FB90-2-10-B	3/4"	Blue	3



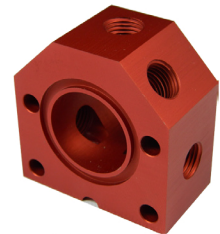
Front



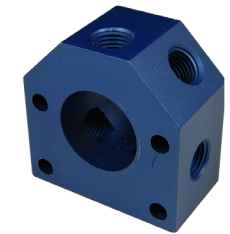
Back

Mod Block

CATALOG NO.	OUTLET HOLE SIZE	BLOCK COLOR	NO. OF OUTLETS
FB4-MOD-10-R	3/4"	Red	5
FB4-MOD-10-B	3/4"	Blue	5



Front



Back

Mid Block (or End Block)

CATALOG NO.	OUTLET HOLE SIZE	BLOCK COLOR	NO. OF OUTLETS
FB2-MIDB-1	n/a	Silver	0

*Used in both the PD and PB Configurations

Miscellaneous Hardware

CATALOG NO.	DESCRIPTION
FB4-OR-1	Viton O-Ring
FB4-TR-1	M6-1.0 Tie Rod (Single Block)
FB4-SHCS-1	M6-1.0 x 25mm SS SHCS
FB4-SHCS-2	M6-1.0 x 30mm SS SHCS
FB4-SHCS-3	M6-1.0 x 40mm SS SHCS
FB4-SHCS-4	M6-1.0 x 45mm SS SHCS
FB4-SHCS-MNT	5/16" x 3" SS SHCS



Front



Back

