

VL Vacuum Loaders

VL Series: 1.5 to 38 lb. (2.2 to 17 kg Capacity)* *Based on 38 lb./ft.³ material density

Reduce labor and resin waste with self-contained, ready-to-install loading systems for pellets and regrind.

VL series loaders provide self-contained, vacuum transfer of plastic pellets and regrinds over short distances using powerful single-phase vacuum motors. Standard models are made for flange mounting to existing bins or hoppers.



Stainless Steel Body

Provides a rugged, non-ferrous material contact surface.

Remote-mount Mini PLC Control

Supplied with 10' (3 m) remote mount cable.

“No-Load” Alarm and Silencer Button

Identifies empty loaders more quickly.

Easy Access Modular Design

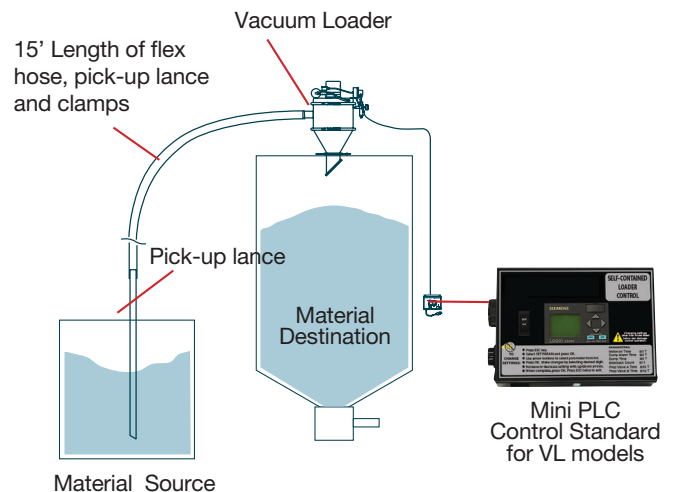
For quick cleanout and material changeover.

Automatic, Pulsed Blowback Filter Cleaning with Accumulator

Powerful blowback reduces frequency of manual filter cleaning.

Machine Mount VL's

Includes a glass material storage tube (customer specified capacity) with integrated vacuum flapper and photo-eye sensor.



Plus:

- 115V/1ph/50-60 Hz (220/1/50-60 optional)
- 15 ft. (4.6m) length of flex hose, pickup wand and hose clamps
- Reinforced polyester disc filter media
- Dump valve with integrated demand level switch on standard models
- 2-Year warranty (Excludes motor, brushes and filter)

DRI-AIR®
Industries, Inc.

 PROUDLY MADE IN THE USA

Many premium features not found on other loaders



Heavy duty stainless steel construction. Stainless steel band clamp with safety latch provides easy access . (Requires no tools).



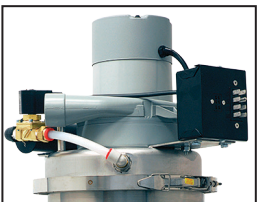
Custom molded neoprene gasket on full-flow dump throat assures tight seal and no loss of vacuum. Unique design keeps resin from contacting gasket surface.



Internal material deflector/flapper check valve with seal ensures that blowback does not travel down the material line.



Expanded aluminum support extends life of durable polyester fines-filter.



Brushless motor option available on VL-12 through VL-38.

Machine mount models are supplied with a height-adjustable photo eye level sensor, base plate adapter, dump valve and quick disconnect clamps for easy clean out.



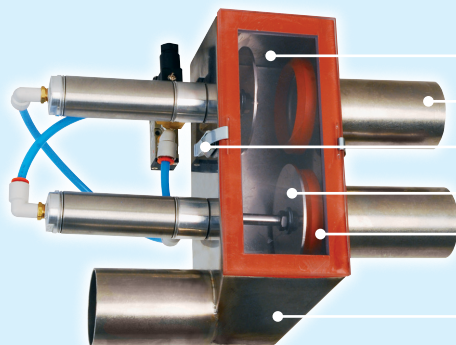
VL-5-MM



Customer specified glass hopper size, 2 lb. through 16 lb. capacity.

Popular Accessories for Vacuum Loaders

External proportioning valve provides proportioning/layering of materials for VL Loaders when used with Mini PLC Control. See separate data sheet.



- Polycarbonate access window
- Inlet/outlet diameter 1.5"
- Quick-release latches
- Stainless steel disc/seat
- Molded V-tip ring gaskets are flange mounted - out of material flow
- Stainless steel body with unique design creates turbulent flow to clear material



Vacuum loaders can be mounted on machine hopper assemblies available in multiple sizes. See separate data sheet.

Mini-PLC Control Controls All Loading Functions



No-load alarm horn
and silencer button

**No-Load
Alarm
Standard!**

- This 115 VAC plug and play control can be conveniently located at operator level. (220/1/50 VAC Optional)
- Selection, programming, and editing of loader parameters are accomplished through a user-friendly interface.
- The graphic faceplate displays parameter, value codes and provides step-by-step programming instructions.
- The control receives a load-initiating signal from a dump throat mounted demand switch.
- Control can be programmed to convey one material up to 99 seconds, or proportion two materials in multiple layers when used with an external proportioning valve.

Inlet diameter: 1.5" (40 mm O.D.)
Pulse Duration: 500 milliseconds
Total Pulses: Adjustable
Air Service: 80 PSI (5.5 bars) required

Model	VL-5 / VL-5-MM		VL-12 / VL-12-MM		VL-19 / VL-19-MM		VL-38 / VL-38-MM	
Characteristic	U.S.	Metric	U.S.	Metric	U.S.	Metric	U.S.	Metric
Volume	1/25 ft. ³	1.1 liters	1/3 ft. ³	9 liters	1/2 ft. ³	14 liters	1.0 ft. ³	28 liters
*Resin Capacity	1.5 lb.	0.7 kg	12 lb.	6 kg	19 lb.	9 kg	38 lb.	17 kg
Inlet/Dump Throat OD	1.5/2 in.	40/50 mm	1.5/2 in..	40/50 mm	1.5/2 in	40 / 50 mm	1.5/5 in.	40/127 mm
**Recommended Throughput / hr. (Brush Type Motor)	200 lb.	91 kg	400 lb.	181 kg	500 lb.	227 kg	650 lb.	295 kg
**Recommended Throughput / hr. (Brushless Motor)	N/A	N/A	650 lb.	295 kg	1000 lb.	454 kg	1200 lb.	544 kg
Load Time: (seconds)	up to 99		up to 99		up to 99		up to 99	
Dump Time: (seconds)	up to 99		up to 99		up to 99		up to 99	
Amps @115V	8		13		13		13	
Compressed Air Usage .2 CFM (5.66 liters/min.)	All Models							

* Resin capacity and throughput based on 38 lb./ft³ bulk density. Adding external proportioning valve reduces throughput.

** Recommended throughput/hr. based on free flowing virgin pellets through 15' of flex hose. Exceeding recommended throughputs may result in shortened brush and filter life however, increased throughputs are possible depending on resin and equivalent feet calculation. Generally, a central conveying system should be used for higher throughputs.

Maximum conveying distance in addition to 15' flex hose, can include 30' of horizontal tubing and 1 elbow. Additional vertical travel, bends or flex hose will reduce recommended throughput.

Specifications:

Standard Dump Throat Models										
Model	A		B		C		D		Shipping Weight	
	in.	cm	in.	cm	in.	cm	in.	cm	lb.	kg
VL-5	23	58	17	43	5	13	6	15	50	23
VL-12	28	71	22	56	11	28	10	25	60	27
VL-19	32	81	26	66	15	38	10	25	70	32
VL-38	38	97	29	74	17	43	16	41	80	36

Dimensions:

Machine Mount Model Dimensions

Must Specify Glass Hopper Size for All Models: (See P/L #300)

*2 lb. Glass: Add 3" to "A" above (No Charge)

8 lb. Glass: Add 3.7" to "A" above

12 lb. Glass: Add 7.7" to "A" above

16 lb. Glass: Add 10.7" to "A" above

*VL-5-MM available with 2 lb. glass only

Options:

See price list #300 (Show as separate line item on order)

Alternate Voltages: 220/1/50-60 in lieu of 115/1/50-60

Must Specify Glass Hopper Size for All -MM Models: (See P/L #300)

For VL-5-MM: 2 lb. Glass only (No Charge). For VL-12-MM: through

VL-38-MM: 2, 8, 12 or 16 lb. Glass.

Brushless Motor: Add -BR to VL model number for VL-12 through VL-38. (Brushless motor adds 2" to overall height)

Custom Drilling of MM Flange:

(Standard base flange is blank for customer drilling.)

Extended Wear Package: Recommended when loading abrasive materials - contact factory

Accessories:

See price list #300 (Separate line item on order and shipped separately)

External Proportioning Valve: 1.5" OD (3.6cm) with coupler, wand, hose & clamps

Remote Demand Sensor for Grinder Drawer 115 VAC:

(Sends demand when covered)

Field Conversion Kit for existing -MM models:

Includes base, glass, top adapter plate and discharge valve.

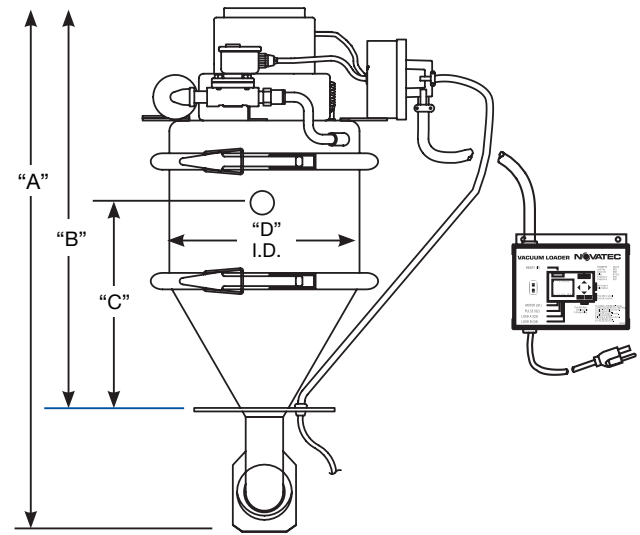
8 lb., 12 lb. and 16 lb. Glass

Brushless Motor Retrofit Kit:

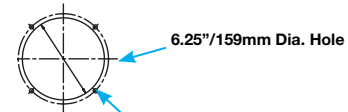
For VL-12 through VL-38 models (for 115 VAC only)

(Replaces existing brush and brushless motors)

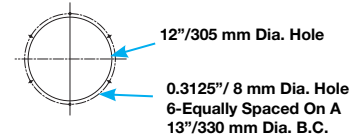
Includes motor, lid and modified J-box with relay.



VL-12, VL-19, VL-5
Mounting Pattern



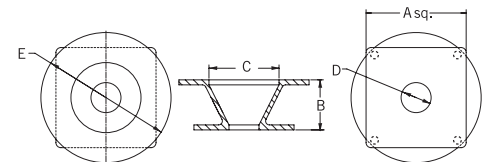
VL-38
Mounting Pattern



Brushless Motor
Retrofit Kit

Machine Mount Adapter

(Included with MM models)



Machine Mount Adapter Dimensions											
Model	Glass Size lb./kg	A		B		C		D		E	
		in	cm	in	cm	in	cm	in	cm	in	cm
VL-(5,12, 19 & 38)-MM	2/9	5	12.7	2.5	6.4	3.5	8.9	1.5	3.8	6.5	16.5
VR-MM-F65**	2/9	6.5	16.5	2.5	6.35	3.5	8.9	2.25	5.7	6.5	16.5
VR-MM-8, -12, -16***	Varies	6	15.2	5.7	14.5	8	20.3	2	5.1	10	25.4

** Optional 2 lb. Glass Adapter Dimensions

*** Optional Large Glass Adapter Dimensions